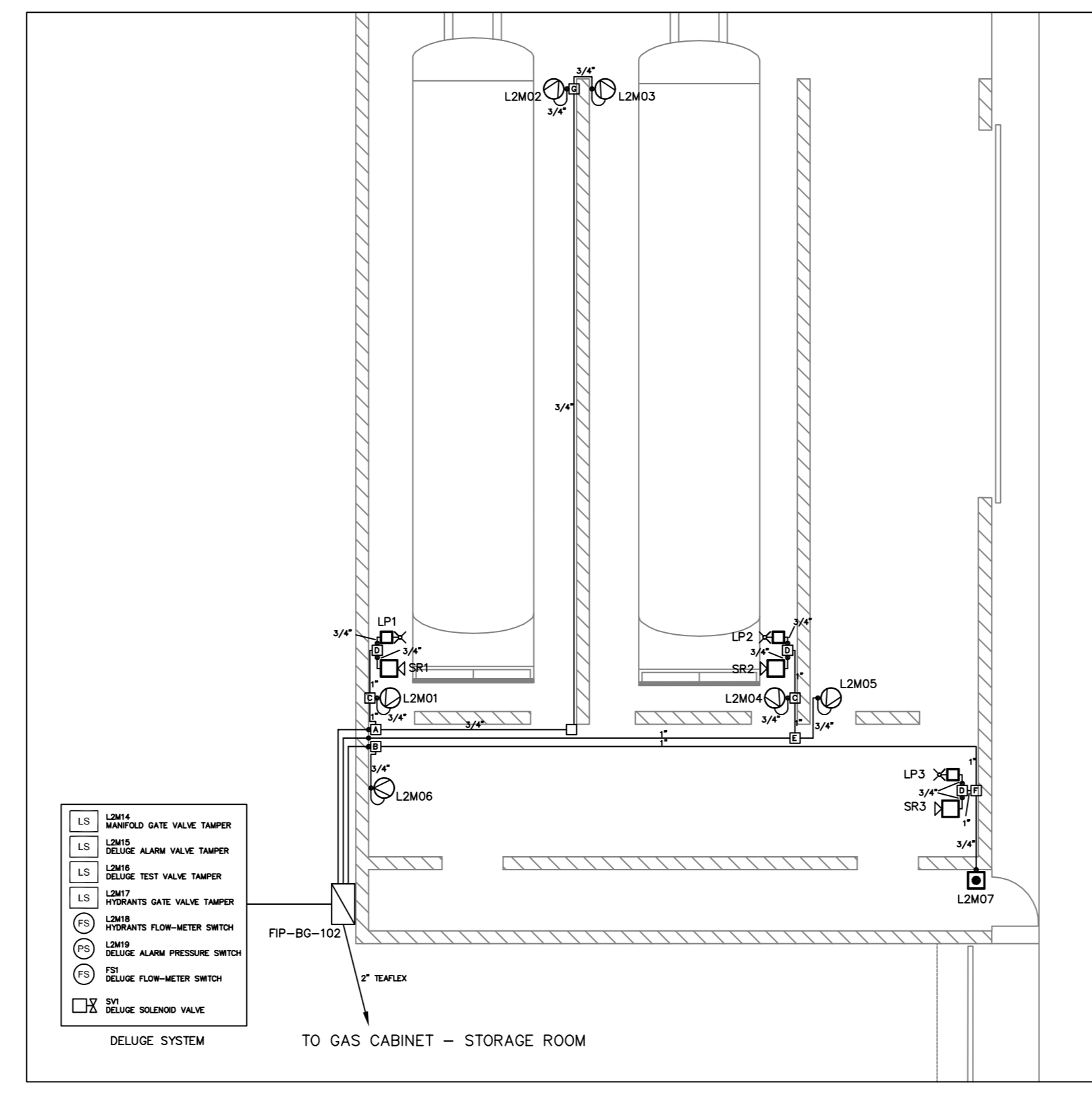
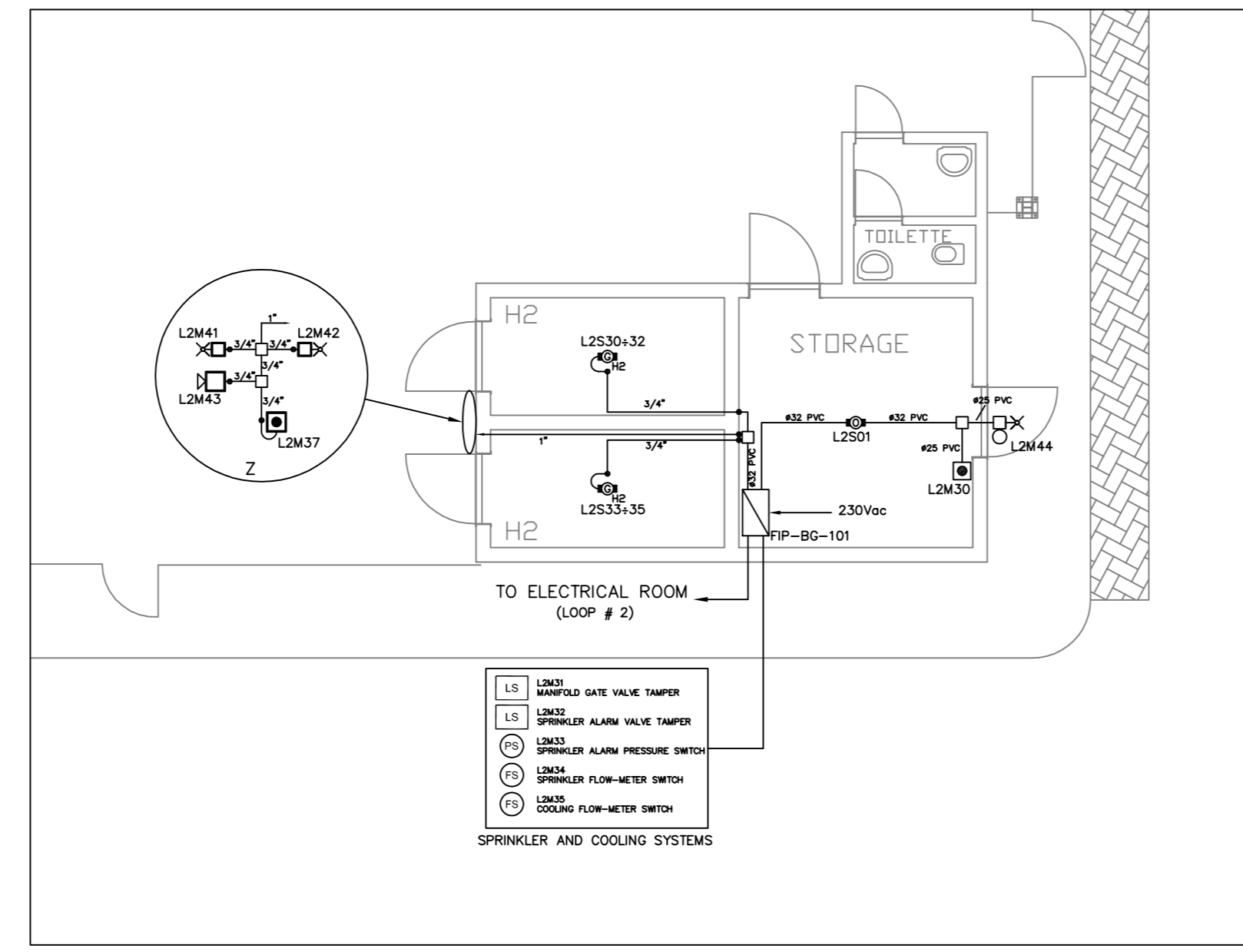


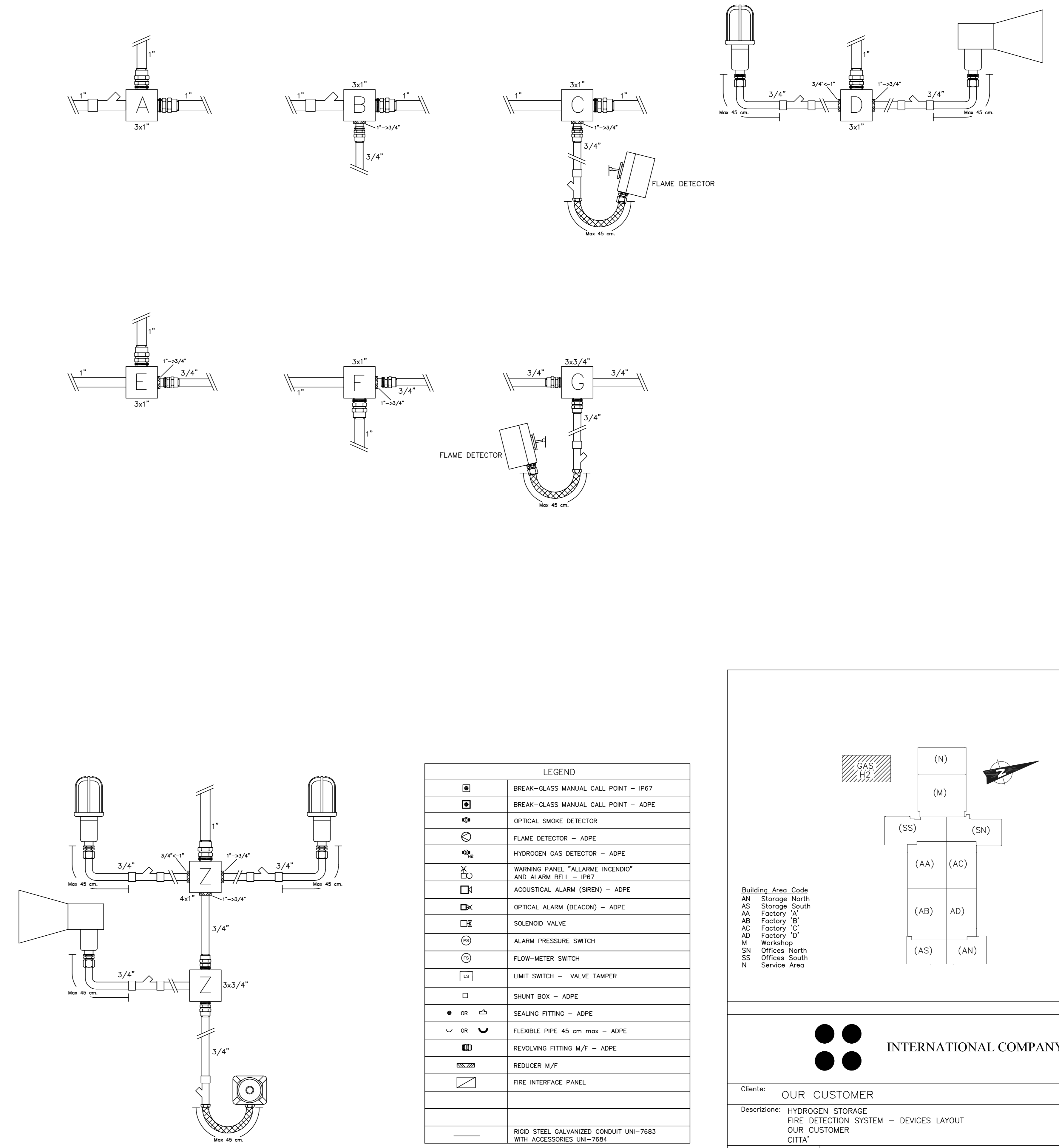
HYDROGEN STORAGE PLAN
SCALE 1:200



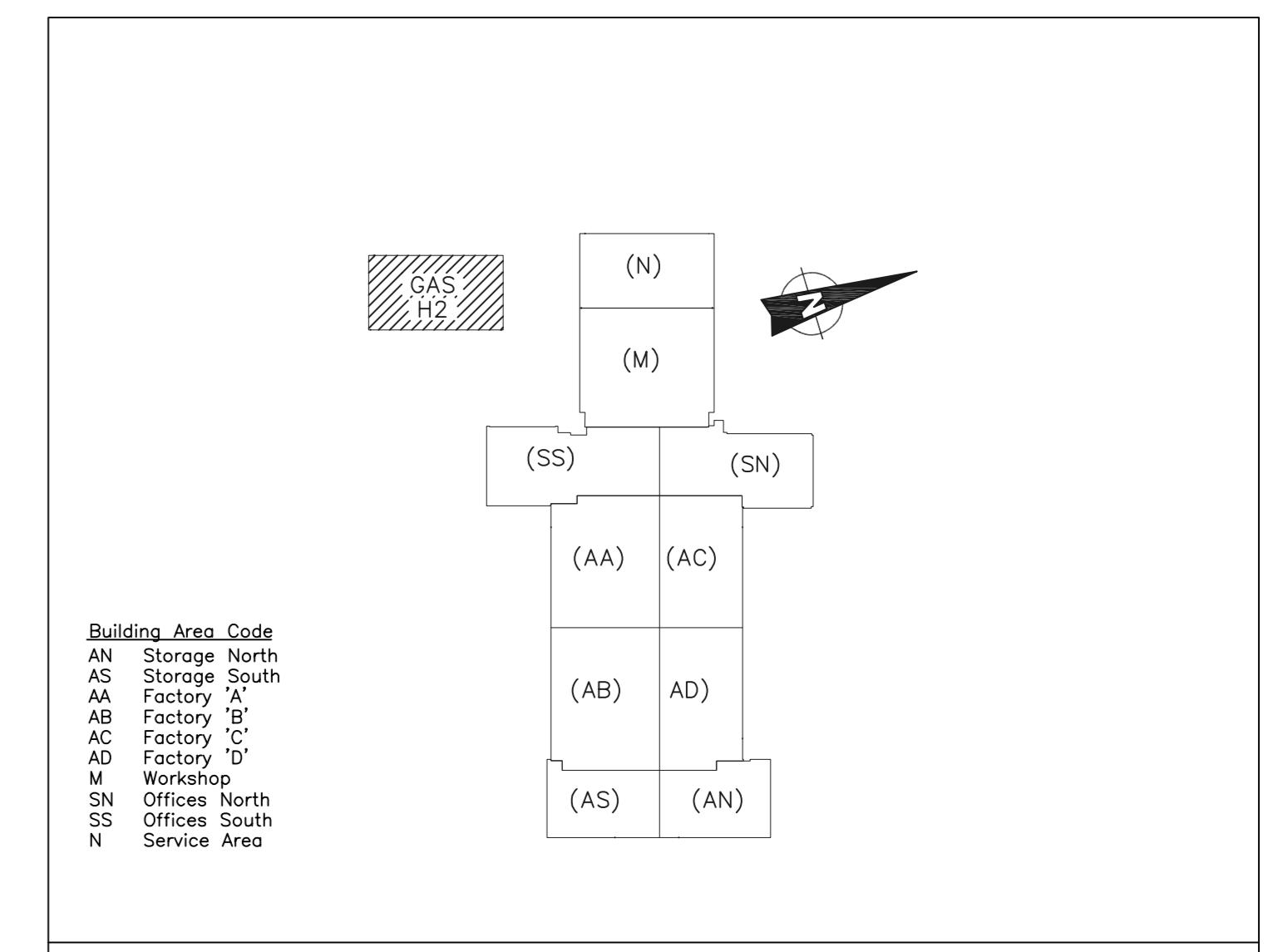
DETAIL "A"
SCALE 1:100



DETAIL "B"
SCALE 1:100



LEGEND	
[Symbol]	BREAK-GLASS MANUAL CALL POINT - IP67
[Symbol]	BREAK-GLASS MANUAL CALL POINT - ADPE
[Symbol]	OPTICAL SMOKE DETECTOR
[Symbol]	FLAME DETECTOR - ADPE
[Symbol]	HYDROGEN GAS DETECTOR - ADPE
[Symbol]	WARNING PANEL "ALLARME INCENDIO" AND ALARM BELL - IP67
[Symbol]	ACOUSTICAL ALARM (SIREN) - ADPE
[Symbol]	OPTICAL ALARM (BEACON) - ADPE
[Symbol]	SOLENOID VALVE
[Symbol]	ALARM PRESSURE SWITCH
[Symbol]	FLOW-METER SWITCH
[Symbol]	LIMIT SWITCH - VALVE TAMPER
[Symbol]	SHUNT BOX - ADPE
[Symbol]	SEALING FITTING - ADPE
[Symbol]	FLEXIBLE PIPE 45 cm max - ADPE
[Symbol]	REVOLVING FITTING M/F - ADPE
[Symbol]	REDUCER M/F
[Symbol]	FIRE INTERFACE PANEL
[Symbol]	RIGID STEEL GALVANIZED CONDUIT UNI-7683 WITH ACCESSORIES UNI-7684



INTERNATIONAL COMPANY

Cliente: **OUR CUSTOMER** Compresso: 1987

Descrizione: **HYDROGEN STORAGE FIRE DETECTION SYSTEM - DEVICES LAYOUT** Disegno: Deposito Idrogeno Imp. Rivelazione

OUR CUSTOMER CITTÀ

Data: 04/12/2007 Riferimento: Scala: 1:100

Rev.	Data	Descrizione	Emesso per approvazione	XXX	YYY
				DRAWN	CHECKED

EnteSistemi si riserva la proprietà di questo disegno con la proibizione di riprodurlo o trasferirlo a terzi senza autorizzazione scritta.