

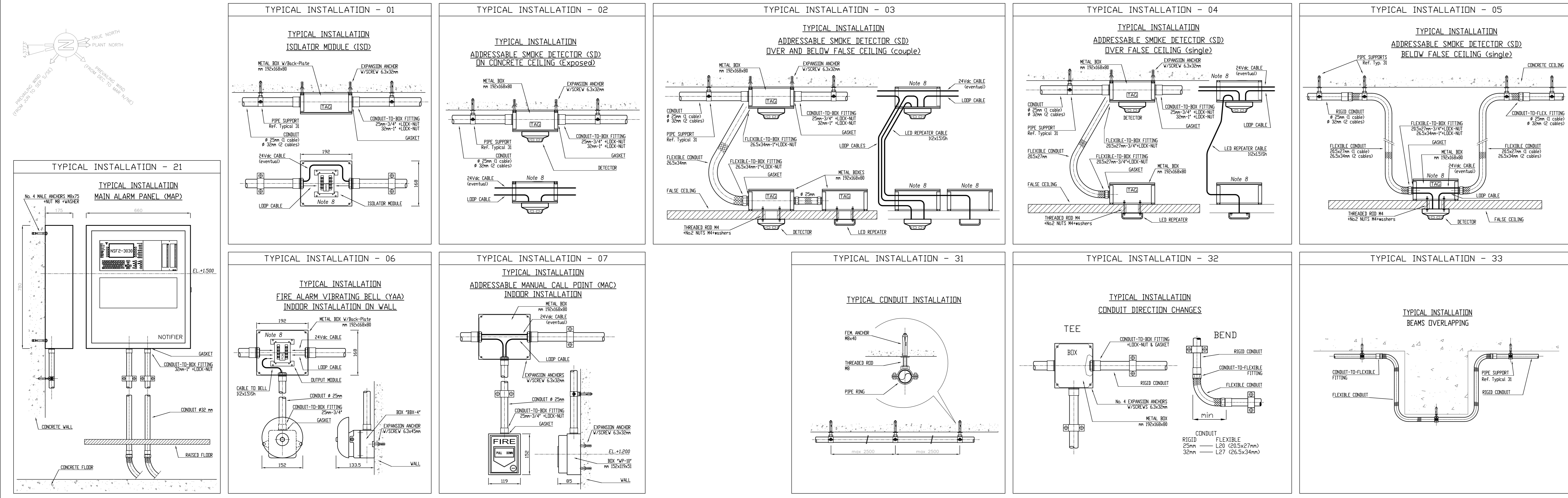
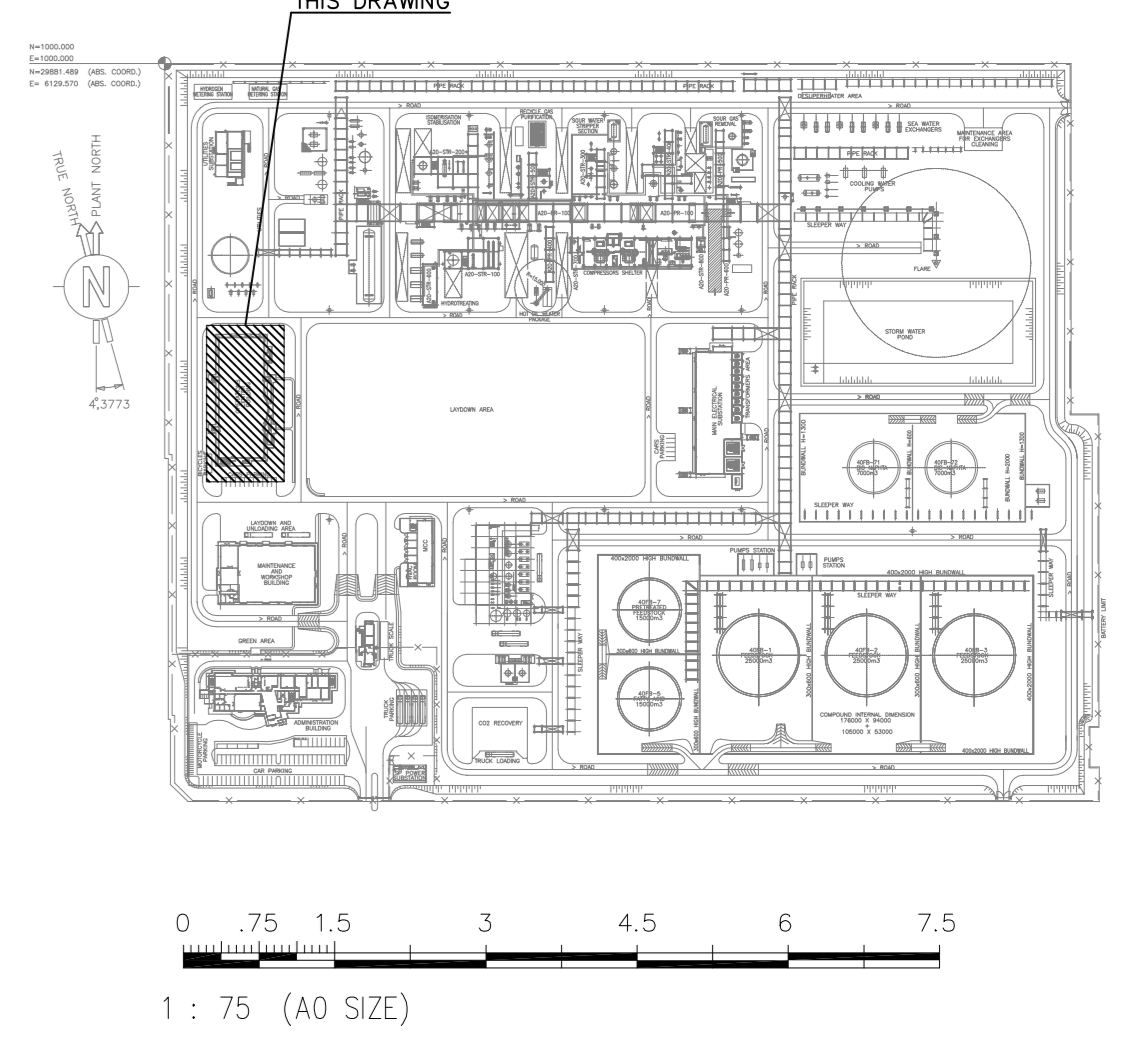
1ST STOREY PLAN
INSTALLATION IN ROOM AND OVER FALSE CEILING

REFERENCE DOCUMENTS

SYMBOL	DESCRIPTION	QUANTITY
(S)	SMOKE DETECTOR (SD)	59
(S)	Exposed installation	-
(S)	SMOKE DETECTOR (SD) with Repeater Lamp	49
(S)	Installation above False Ceiling (concealed)	-
(S)	SMOKE DETECTOR (SD)	-
(S)	Installation below Raised Floor	-
(S)	REMOTE REPEATER LAMP	-
(S)	for Detectors below Raised Floor	-
(S)	PROJECTED BEAM SMOKE DETECTOR	-
(S)	Left: Detector - Right: Reflector	-
(Y)	ALARM BELL (YAA)	8
(M)	MANUAL ALARM CALL POINT (MAC)	8
(I)	ISOLATOR MODULE	5
(FRP)	EXTERNAL FIRE-ALARM REPEATER PANEL	-
(MAP)	MAN ALARM PANEL	1
(FE)	PORTABLE FIRE EXTINGUISHER	16
(FE)	5 Kg CO2	-
(FE)	PORTABLE FIRE EXTINGUISHER	-
(FE)	75 Kg ABC DRY CHEMICAL	2
(HR)	WHEELED FIRE EXTINGUISHER	2
(R)	HOSE REEL	-
(B)	BOX	n.d.
(E)	METALLIC CONDUIT	ELEVATION CHANGES: <u>Upper</u> / <u>Lower</u>
(R)	RISER BETWEEN DIFFERENT STOREYS	UPWARD / DOWNWARD
(S)	STEEL CABLE TRAY	min. 100x100
(C)	REFERENCE POINT FOR CONTINUATION ON A DIFFERENT SHEET	-

- GENERAL NOTES
- ALL DIMENSIONS ARE IN MILLIMETER AND ELEVATIONS ARE IN METER.
 - THE ELEVATION +100.000 CORRESPONDS TO (HIGH POINT OF PAVING) AND IS EQUIVALENT TO +100.200 A.S.L.
 - WHEN NOT QUOTED, THE DETECTORS MUST BE POSITIONED NEAR THE CENTER OF THE ROOM.
 - WHEN NOT INDIVIDUALLY QUOTED, THE DETECTORS BELOW FALSE CEILING ARE POSITIONED ON THE VERTICAL OF THE CORRESPONDING DETECTOR OVER FALSE CEILING.
 - THE POSITION OF SMOKE DETECTORS IS INDICATIVE AND MAY BE MOVED IN A 1000mm SQUARE CENTERED ON THE DETECTOR ITSELF, LEAVING 500mm MIN. FROM WALLS, BEAMS AND AIR CONDITIONING OUTLETS.
 - IF CONDUIT DIAMETER IS NOT SHOWN, PLEASE REFER TO TYPICAL INSTALLATION DETAILS.
 - ALL THE WALL PENETRATIONS MUST BE SIZED ACCORDING TO THE DIAMETER OF THE CONDUIT AND CAREFULLY EXECUTED; THE HOLES MUST BE SEALED WHEN INSTALLATION IS COMPLETED.
 - FOR PROPER INSTALLATION AND ELECTRICAL CONNECTIONS OF THE DEVICES, PLEASE REFER TO MANUFACTURER'S MANUALS.

KEY PLAN



OIL INTERNATIONAL CO.

FIRE ALARM SYSTEM
DETECTION LAYOUT
INDUSTRIAL COMPLEX PROJECT
OIL PLANT

JOB NUMBER	UNIT PREFIX	ZONE
XXX/7/2007	YYY	
SCALE	FRAME	SUBJ
1:50	A0	25752-ADR-25
Contractor	Order No. / Order No.	REV
Dwg. N.		01
DOC. NUMBER	Commissa / Job No.	
Dwg. N.	1825-2009	
Name File	Fg. Sh.	Tot Fg. Total
	1	2